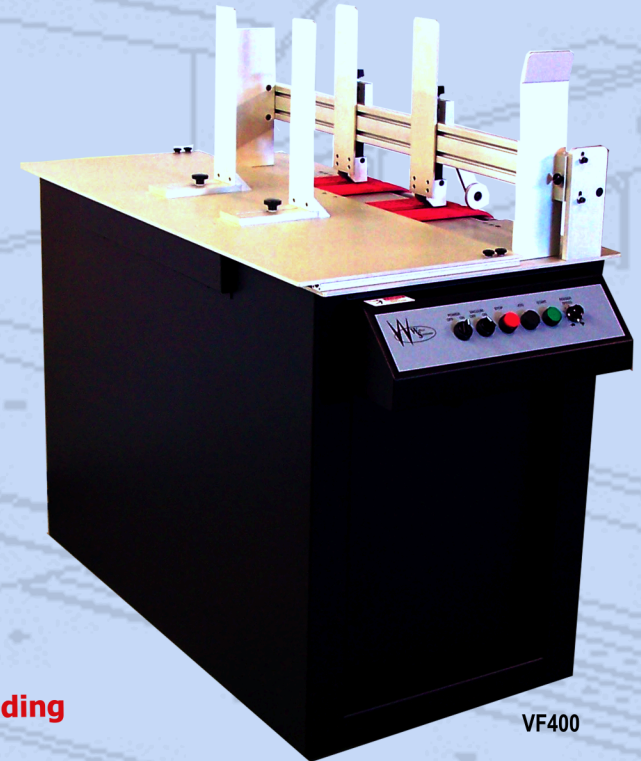


**VF200
VF400**
HIGH SPEED
COMMERCIAL
VACUUM FRICTION
FEEDERS



VF200



VF400

Patent Pending

Walco Systems has created the next progression of feeders for a new era. The Evolution series feeders are engineered to easily feed a wide variety of products therefore eliminating the high costs of purchasing both a shuttle and friction feeder. Operators will appreciate the new innovative design which allows for quick and easy setup. Quality components will insure customer satisfaction. Like all Walco Systems products, the Evolution series feeders are designed for the high capacity use demanded by today's commercial environment.

Features:

- Quick and Easy Setup
- Variable Speed Transport
- Adjustable Infeed Product Guides
- Ergonomic Operator Panel
- Feeds Wide Variety of Products
- High Capacity Feed Hopper
- Independently Controlled Self-Contained Vacuum
- Non-Proprietary Components

Uncompromising Drivetrain:

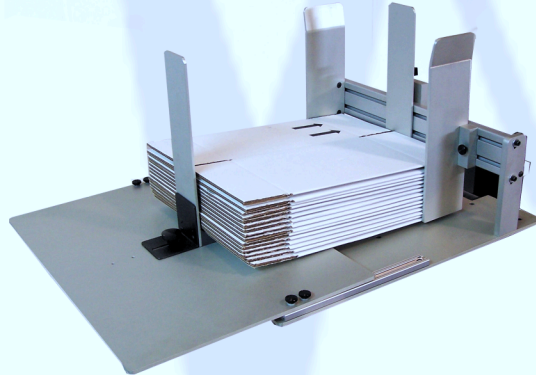
- High Torque Gear Drive Motor
- Steel Drive Pulleys
- 12" Wide All Steel Rollers
- Large Diameter Steel Shafts
- Sealed Shaft Locking Collar Bearings

Feeds:

Bags Envelopes Heavy Card Stocks Corrugated Cardboard Jewel Cases
Perfect Bound Books Calendars Sheet Stocks

Feed and Transport for:

Affixing and Inkjet Equipment



Options:

Speed Following

Allows Walco Systems feeders & transports to maintain matching belt speeds, using one speed control.

Demand Feed

Allows Walco Systems feeders to feed one piece on a demand signal.

Specifications:

VF200

Material Size: Min. 3" x 5" - Max 19.5" x 28"

Material Thickness: 1" Max (In Standard Configuration)

Electrical: 110 VAC 1-Phase 10 Amp Circuit

Interlock: Dry Contact (Low Volt) Standard

Operator Controls: Power (on/off), Vacuum (on/off),
Stop, Jog, Start, Feed Speed

Physical: 24"L x 23.5"W x 33-36" H

VF400

Material Size: Min. 3" x 5" - Max 41" x 28"

Material Thickness: 1" Max (In Standard Configuration)

Electrical: 110 VAC 1-Phase 10 Amp Circuit

Interlock: Dry Contact (Low Volt) Standard

Operator Controls: Power (on/off), Vacuum (on/off),
Stop, Jog, Start, Feed Speed

Physical: 24"L x 50.5"W x 33-36" H

Patent Pending

All Specifications Subject To Change Without Notice



Walco Systems LLC

1431-B Lear Industrial Pkwy
Avon, Ohio 44011

440.937.0909 440.937.0910 (fax)
www.walcosystems.com
email: info@walcosystems.com

Authorized Walco Systems LLC Dealer

